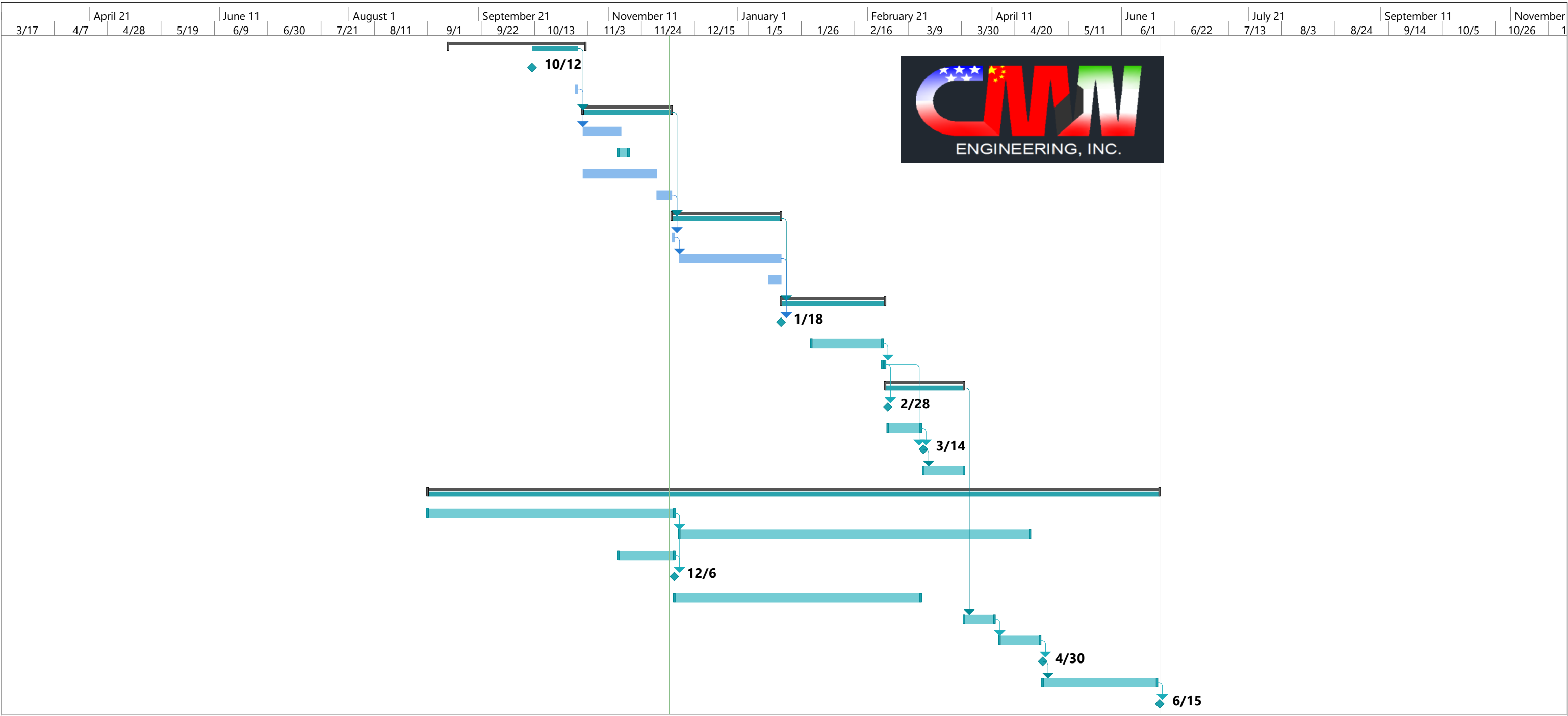


ID	Task Mode	Task Name	Duration	Start	Finish	Predecessor	May 1		June 21		August 11			October 1			November 21			January 11		March 1	
							5/6	5/27	6/17	7/8	7/29	8/19	9/9	9/30	10/21	11/11	12/2	12/23	1/13	2/3	2/24	3/17	
1		<b>Task 1: Project Management/Review Existing Projects</b>	<b>41 days</b>	<b>Mon 9/9/13</b>	<b>Fri 11/1/13</b>																		
2		1.1 Precast/Prestressed Seminars Begin	0 days	Sat 10/12/13	Sat 10/12/13																		
3		1.4 TPAC Manufacturing Plant Visit	1 day	Tue 10/29/13	Tue 10/29/13																		
4		<b>Task 2: Preliminary Analysis and Design</b>	<b>28 days</b>	<b>Fri 11/1/13</b>	<b>Thu 12/5/13</b>	<b>1</b>																	
5		2.1.1 Concrete Analysis/ Cylinder Testing	13 days	Fri 11/1/13	Fri 11/15/13	<b>3</b>																	
6		2.1.2 Concrete Samples Analyzed	2 days	Fri 11/15/13	Mon 11/18/13																		
7		2.2 Beam Design Analysis	23 days	Fri 11/1/13	Fri 11/29/13																		
8		2.3 Design Decision Matrix	5 days	Sat 11/30/13	Thu 12/5/13																		
9		<b>Task 3: Final Design and Analysis</b>	<b>31 days</b>	<b>Fri 12/6/13</b>	<b>Fri 1/17/14</b>	<b>4</b>																	
10		3.1 Choose Alternative	1 day	Fri 12/6/13	Fri 12/6/13	<b>8</b>																	
11		3.2 Develop Shop Drawing	30 days	Mon 12/9/13	Fri 1/17/14	<b>10</b>																	
12		3.3 Response 2000 Report	5 days	Mon 1/13/14	Fri 1/17/14																		
13		<b>Task 4: Beam Fabrication</b>	<b>30 days</b>	<b>Sat 1/18/14</b>	<b>Thu 2/27/14</b>	<b>9</b>																	
14		4.1 Shop Drawings Sent to Client	0 days	Sat 1/18/14	Sat 1/18/14	<b>11</b>																	
15		4.2 Beam Manufacturing	20 days	Thu 1/30/14	Wed 2/26/14																		
16		4.3 Beam Transportation	1 day	Thu 2/27/14	Thu 2/27/14	<b>15</b>																	
17		<b>Task 5: Beam Testing</b>	<b>22 days</b>	<b>Fri 2/28/14</b>	<b>Sun 3/30/14</b>																		
18		5.1 Prediction Analysis (Response 2000)	1 day	Fri 2/28/14	Fri 2/28/14	<b>16</b>																	
19		5.2 "Hulk" Preparation	10 days	Sat 3/1/14	Thu 3/13/14																		
20		5.3 Testing and Gathering Data	1 day	Fri 3/14/14	Fri 3/14/14	<b>16,19</b>																	
21		5.4 Analyze Results	12 days	Sat 3/15/14	Sun 3/30/14	<b>20</b>																	
22		<b>Task 6: Capstone &amp; Contest Deliverables</b>	<b>211 days</b>	<b>Sun 9/1/13</b>	<b>Sun 6/15/14</b>																		
23		6.1.1 Project Website	75 days	Sun 9/1/13	Fri 12/6/13																		
24		6.1.2 Completion of Project Website	100 days	Mon 12/9/13	Fri 4/25/14	<b>23</b>																	
25		6.2.1 Proposal Report/Presentation	17 days	Fri 11/15/13	Fri 12/6/13																		
26		6.2.2 CENE 476 Deliverables Submitted	1 day	Fri 12/6/13	Fri 12/6/13	<b>23,25</b>																	
27		6.3 50% Design Report/Presentation	70 days	Sat 12/7/13	Thu 3/13/14																		
28		6.4.1 First Draft	10 days	Mon 3/31/14	Fri 4/11/14	<b>17</b>																	
29		6.4.2 Final Project Report/Presentation	12 days	Mon 4/14/14	Tue 4/29/14	<b>28</b>																	
30		6.4.3 Final Project Report Submitted	1 day	Wed 4/30/14	Wed 4/30/14	<b>29</b>																	
31		6.5 Final Report to PCI	33 days	Thu 5/1/14	Sat 6/14/14	<b>30</b>																	
32		Project Complete	1 day	Sun 6/15/14	Sun 6/15/14	<b>31</b>																	

Project: Updated Capstone Sch  
Date: Thu 12/5/13

Task		Project Summary		Manual Task		Start-only		Deadline	
Split		Inactive Task		Duration-only		Finish-only		Progress	
Milestone		Inactive Milestone		Manual Summary Rollup		External Tasks		Manual Progress	
Summary		Inactive Summary		Manual Summary		External Milestone			



Project: Updated Capstone Sch  
Date: Thu 12/5/13

Task		Project Summary		Manual Task		Start-only		Deadline	
Split		Inactive Task		Duration-only		Finish-only		Progress	
Milestone		Inactive Milestone		Manual Summary Rollup		External Tasks		Manual Progress	
Summary		Inactive Summary		Manual Summary		External Milestone			